

Satellite Image Based Study of Nature of Coal Mining to Evaluate Insurance Claim, Meghalaya

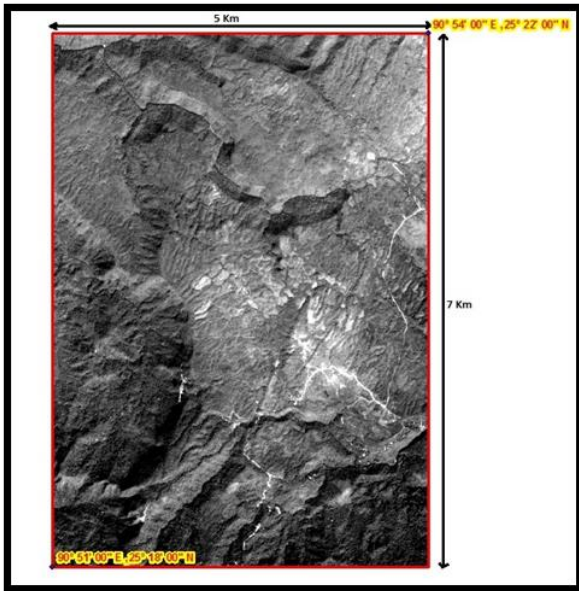


Fig.1 Location of study area in Meghalaya

Business Need:

The Insurers know that to be effective they must offer the products and services customers need at the right price. Insurance has a robust geographic constituent, from managing the addresses of policyholders to the location of risk to the logistics of handling claims. This is where RS&GIS can help you the most.

The business requirement was to evaluate insurance claim with the help of Satellite Image Based Study of Nature of Coal Mining in study area situated in Meghalaya, India.

Inputs Used:

a) Satellite Images (For 2D and 3D Analysis)

S. No	Sensor	Acquisition Date
1	Cartosat-1	24-Jan-2007
2	Cartosat-1	9-May-2008
3	Cartosat-1	18-Feb-2009
4	Cartosat-1	20-Feb-2010

Source: National Remote Sensing Centre, Hyderabad

b) Google Earth Image

Business Solution:

The appropriate satellite images were acquired to create:

- Transportation Network Map
- Boundary for the existing open cast map, if any
- Digital Terrain Models using different Satellite Stereo-pairs
- Change Detection maps

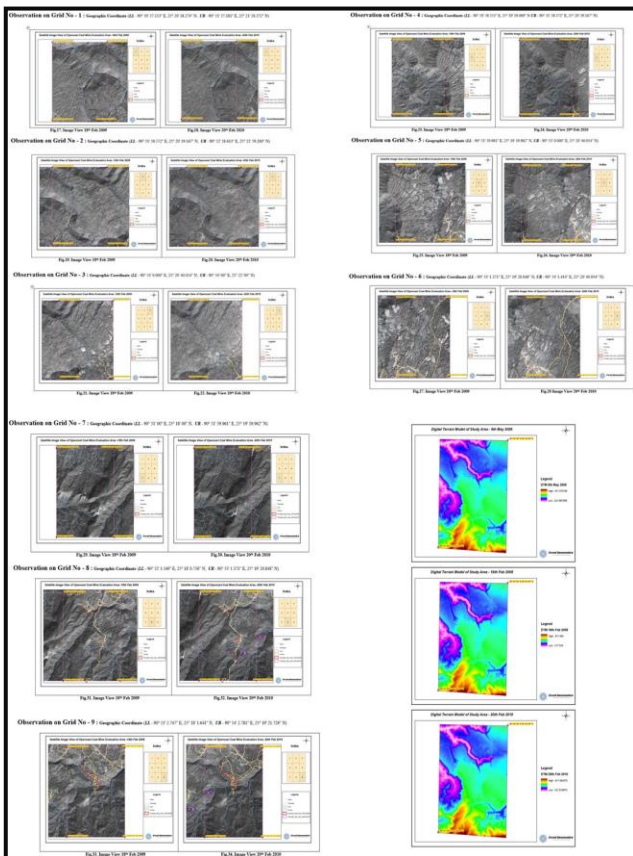


Fig2. Image Analysis (18 Feb 2009 to 20 Feb 2010) in Study Area and DTMs of (2008, 2009 and 2010)

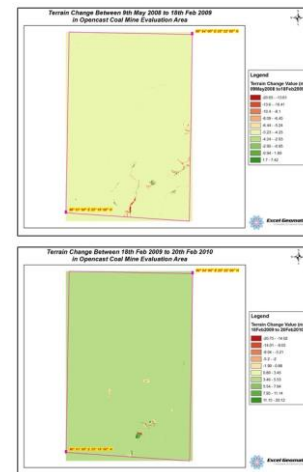


Fig3. Terrain Change between 9th May 2008 to 20th Feb 2010

Project Shipment:

Draft Report on Nature of Coal Mining in the Specified Study area of Meghalaya